



**DURHAM CATHOLIC
DISTRICT SCHOOL BOARD**
Learning and Living in Faith

Memorandum

To: Board of Trustees

From: Tracy Barill, Director of Education

Date: December 19, 2022

Subject: **Brooklin Regular (English) Track Study – Final Staff Report**

Origin: Mike O’Neill, Superintendent, Whitby Family of Schools
Scott Grieve, Superintendent, Business, Finance, Facilities Services

Recommendations

Moved by _____, seconded by _____

“THAT the Durham Catholic District School Board approve the proposed boundary revisions to the Brooklin Regular (English) Track program as outlined in the Recommended Option section (pgs 12-14) of the *Brooklin Regular (English) Track Study – Final Staff Report*, dated December 19,2022.”

Moved by _____, seconded by _____

“THAT the Durham Catholic District School Board approve the change in boundary of the Brooklin Regular (English) Track boundary for September 2023.”

Moved by _____, seconded by _____

“THAT the current grade 6 and 7 Regular (English) students presently attending St. Leo Catholic School be allowed to graduate from St. Leo subject to sufficient interest and viable class sizes.”

Rationale

On January 24, 2022, the Board of Trustees received the Long-Term Accommodation Plan 2022-2026 (LTAP) report and approved the guiding principles and actions to be undertaken. Within the LTAP report, staff were directed to undertake a Brooklin Regular (English) Track boundary review.

The Board has had declining or stagnant enrolment in all three Brooklin schools in both the Regular Track (RT) and French Immersion (FI) programs. In 2020, the board undertook a study of the FI program in Brooklin, and after a community consultation process, it was determined that the consolidation of the FI would occur at St. Leo Catholic School for September 2021, which the Board of trustees approved on December 14, 2020.

Approval was given by the Board on September 26, 2022, to proceed with forming the Brooklin Regular (English) Track Study Committee. The Committee was tasked with the mandate to prepare a report recommending a preferred option. The Committee's recommendation has been presented to the Director of Education and forms the basis of staff's recommendation for Trustee consideration and approval.

Alignment with Discovery 2023

The Board adopted a renewed strategic Plan in 2019 "Discovery 2023: Renewing the Vision" that will guide the Board over the next 3 years. This plan addresses the major strategic priorities that the Board must continue to address.

Our Catholic learning community is based on a strong foundation that has flourished for over 50 years, providing quality Catholic education to generations of diverse learners. Discovery 2023: Renewing the Vision reflects our commitment to maintaining the strength of our system, rooted in faith, with Jesus Christ at the centre of everything we do. Our commitment to Excellence, Equity and Engagement propels our strategic priorities. The plan outlines the Boards' priorities, goals, and actions, which form a harmonized system in which everyone works together, bearing witness to our motto, Learning and Living in Faith.

Within the Plan, Strategic Priority 5: Managing Resources addresses the stewardship of resources is essential to the efficient and effective management and operation of the board. Financial, human resource and asset management promote a fiscally responsible Catholic school system which is integral to public trust, transparency, and accountability. Management of resources oriented towards student achievement, well-being and faith formation priorities is the responsibility of each employee.

Attendance Area Policy

In accordance with Board Policy PO-415 School Attendance Area, a proposed school boundary is developed for each Catholic Elementary and Secondary School located within the Board's jurisdiction. The development of boundaries is undertaken to create neighbourhood or community schools. The boundary of each school should be of a sufficient size to sustain the long-term operation of the school at a full or near full capacity level.

Staff is required to report to the Board of Trustees with respect to the proposed boundaries. The Board of Trustees approves "In Principle" so that when the community consultation process commences, the affected schools will have a draft set of boundaries to work from and comment upon.

Boundary Review Process

1. Staff develop draft boundaries for review by Administrative Council;
2. The draft boundaries are brought forward to Trustees for Approval “In Principle”;
3. Staff are directed to meet with the affected school communities to present the approved “In Principle” boundaries and receive public input;
4. Staff review all input and present the proposed final boundaries to the Board of Trustees for approval;
5. The Board of Trustees provides final approval to the boundaries;
6. Staff communicate the approved boundaries to all affected parents and guardians of students living within the school boundaries and communicate all changes to attendance.

ANALYSIS

Previous English Boundary Studies

The Board has conducted several English boundary and program studies since 2014 to address the concerns of over and under-utilized schools throughout the Board’s jurisdiction. The following lists the dates of the studies:

- June 2014 - South Ajax English Boundary study
- December 2014 - South Oshawa Grade 7&8 English Program study
- April 2017 - Northwest Whitby English Boundary study
- May 2017 - Father Leo J Austin Catholic Secondary School and All Saints Catholic Secondary School Boundary Report
- May 2019 - South Central Oshawa English & FI Boundary study
- September 2019 - Oshawa Secondary School English Boundary study

Historical Enrolment in Brooklin 2012-2021

Brooklin has three Catholic elementary schools to serve its current population. St. Leo CS, replacement school, was opened in 1998 near the center of Brooklin. St. Bridget CS was opened in 2004 in the west end and St. John Paul II CS was most recently opened in 2013 in the east end of Brooklin.

Brooklin Regular (English) Track Study – Final Staff Report

Since 2012, all three schools have experienced a steady decline in the English (regular track) panel of enrolment. This is due to the slower than expected pace of development in the main and expanded portion of Brooklin since 2012.

Table 1: St. Leo CS Historical English Enrolment

Year	JK	SK	Gr1	Gr2	Gr3	Gr4	Gr5	Gr6	Gr7	Gr8	Total
2012	48	63	29	29	28	35	42	56	53	44	427
2013	16	25	16	28	31	17	17	36	32	40	258
2014	19	18	11	16	15	21	16	21	34	34	205
2015	15	22	7	15	16	17	20	14	19	35	180
2016	8	17	11	8	16	16	17	19	12	20	144
2017	16	9	7	11	10	17	18	18	20	12	138
2018	13	17	6	8	11	12	17	18	18	18	138
2019	15	16	8	5	11	8	12	15	15	16	121
2020	22	17	8	9	6	15	10	12	17	16	132
2021	37	33	13	10	15	6	16	11	9	17	167

Table 2: St. Bridget CS Historical English Enrolment

Year	JK	SK	Gr1	Gr2	Gr3	Gr4	Gr5	Gr6	Gr7	Gr8	Total
2012	50	52	56	65	74	63	56	51	48	41	556
2013	59	47	47	49	54	66	60	49	47	48	526
2014	40	56	42	47	47	56	65	57	52	45	507
2015	35	43	52	39	49	45	56	66	57	53	495
2016	26	34	42	53	42	46	47	54	68	57	469
2017	32	27	36	41	53	42	46	48	48	66	439
2018	37	34	29	35	42	51	41	46	47	46	408
2019	28	37	35	29	37	43	49	43	42	50	393
2020	23	35	41	33	31	36	43	47	39	42	370
2021	31	29	38	44	32	30	38	41	48	38	369

Table 3: St. John Paul II CS Historical English Enrolment

Year	JK	SK	Gr1	Gr2	Gr3	Gr4	Gr5	Gr6	Gr7	Gr8	Total
2012	0	0	0	0	0	0	0	0	0	0	0
2013	34	31	20	22	17	20	23	14	24	17	222
2014	38	45	19	20	28	22	23	25	15	25	260
2015	35	44	18	22	20	27	22	21	25	17	251
2016	30	36	23	17	23	20	27	22	20	25	243
2017	28	33	18	25	19	23	19	28	21	18	232
2018	29	26	15	22	29	20	25	18	27	21	232
2019	20	30	15	17	23	29	19	25	16	27	221
2020	22	17	20	14	23	22	28	18	26	16	206
2021	16	20	19	23	20	29	27	31	18	25	228

Projected Enrolment 2022-2031

The projected enrolment based on the current boundaries in the English programs at St. Leo CS, St. Bridget CS and St. John Paul II CS is anticipated to remain somewhat stagnant from 2022 to 2026, then steadily increase from 2027 to 2031 when the pace of new development in the Brooklin expansion area is anticipated to accelerate.

Table 4: St. Leo CS Projected English Enrolment

Year	JK	SK	Gr1	Gr2	Gr3	Gr4	Gr5	Gr6	Gr7	Gr8	Total
2022	25	37	8	14	10	16	7	14	11	8	151
2023	25	26	10	9	15	11	18	7	16	12	149
2024	25	25	7	10	10	17	12	18	8	18	150
2025	25	25	7	8	12	12	18	13	21	9	151
2026	26	26	8	9	9	14	13	19	15	24	164
2027	28	28	10	10	11	11	16	14	23	18	167
2028	29	29	11	11	12	12	13	17	17	26	176
2029	30	30	12	12	13	13	14	14	19	19	177
2030	32	32	14	14	14	15	15	15	17	23	190
2031	34	34	16	16	17	17	18	18	19	20	208

Table 5: St. Bridget CS Projected English Enrolment

	JK	SK	Gr1	Gr2	Gr3	Gr4	Gr5	Gr6	Gr7	Gr8	Total
2022	29	29	28	38	44	32	30	38	37	48	353
2023	30	30	29	29	39	45	33	31	35	38	340
2024	33	33	31	31	31	42	48	36	31	38	354
2025	37	37	36	36	36	36	46	50	35	33	384
2026	44	44	43	43	43	43	43	53	53	42	451
2027	52	52	50	50	50	50	50	50	57	61	525
2028	60	60	59	59	59	59	59	59	56	65	594
2029	70	70	69	69	69	69	69	69	66	66	683
2030	80	80	78	78	78	78	78	78	76	78	783
2031	89	89	88	88	88	88	88	88	85	87	876

Table 6: St. John Paul II CS Projected English Enrolment

Year	JK	SK	Gr1	Gr2	Gr3	Gr4	Gr5	Gr6	Gr7	Gr8	Total
2022	18	17	10	21	24	20	29	27	31	18	215
2023	19	18	9	11	22	24	20	29	27	31	209
2024	20	20	10	10	12	23	25	21	30	28	199
2025	21	21	11	12	12	13	24	26	22	31	192
2026	22	21	13	14	14	13	15	25	28	23	189
2027	24	24	14	16	16	16	15	17	27	30	200
2028	27	27	17	17	19	19	18	17	19	29	210
2029	30	30	20	21	21	21	21	21	20	22	226
2030	32	32	23	23	24	23	24	24	23	23	252
2031	35	35	25	26	27	27	26	26	27	26	279

Capacity and Utilization

St. Leo CS was constructed in 1998 and had an addition in 2004. The school had a capacity of 453 pupil places until 2018 when a new childcare centre opened. The conversion of 8 classrooms for the childcare resulted in a reduction to the school's capacity to the current 266 pupil places. With the recent FI program being moved from St. John Paul II CS and combined with the existing FI program that was already at St. Leo CS, the total enrolment for the school for both the RT and FI programs is projected to be 311 students in 2022-2023. The combined enrolment is expected to grow slightly to 376 students by 2031. The school will operate above capacity over the next 10 years, due to the growth from the Brooklin expansion area which encompasses all the French boundary.

St. John Paul II CS was constructed in 2013 with a capacity of 481 pupil places. The creation of an EarlyON centre in 2018 within the school reduced the capacity to the current 458 pupil places. The enrolment for the school for the English program is projected to decline to a low of 209 students in 2023 once the remaining "grandfathered" French immersion students have transferred out of the school. Development growth for the Brooklin Expansion Area is expected to raise projections to 279 students by 2031. The school will operate below 50% of its capacity until 2030.

St. Bridget CS was constructed in 2004 with a capacity of 384 pupil places and had an addition in 2015 that increased the capacity to the current 513 pupil places. The enrolment for the school for the English program is projected to decline to a low of 340 students in 2023. Residential growth in the Brooklin Expansion Area is expected to raise these projections to 876 students by 2031. The school will operate between 66% to 102% of its capacity until 2027 when it will begin to operate over 100% capacity and up to 171% capacity by 2031.

Table 7: Capacity and Utilization

St. Leo	ACTUAL		PROJECTED									
	Oct-21	May-22	2022	2023	2024	2025	2026	2027	2028	2029	2030	2031
Regular Track (Grades 1-8)	97	95	88	99	101	100	111	112	118	117	127	140
Kindergarten	70	64	62	50	50	51	53	55	58	60	63	68
French Immersion	147	144	160	178	169	170	173	175	175	180	174	168
Total	314	303	311	327	320	321	337	342	351	357	364	376
Capacity	266	266	266	266	266	266	266	266	266	266	266	266
Utilization	118%	114%	117%	123%	120%	121%	127%	129%	132%	134%	137%	142%

St. John Paul II	ACTUAL		PROJECTED									
	Oct-21	May-22	2022	2023	2024	2025	2026	2027	2028	2029	2030	2031
Regular Track	228	223	215	209	199	192	189	200	210	226	252	279
French Immersion	38	38	23	0	0	0	0	0	0	0	0	0
Total	266	261	238	209	199	192	189	200	210	226	252	279
Capacity	458	458	458	458	458	458	458	458	458	458	458	458
Utilization	58%	57%	52%	46%	44%	42%	41%	44%	46%	49%	55%	61%

St. Bridget	ACTUAL		PROJECTED									
	Oct-21	May-22	2022	2023	2024	2025	2026	2027	2028	2029	2030	2031
Regular Track	369	364	353	340	354	384	451	525	594	683	783	876
French Immersion	0	0	0	0	0	0	0	0	0	0	0	0
Total	369	364	353	340	354	384	451	525	594	683	783	876
Capacity	513	513	513	513	513	513	513	513	513	513	513	513
Utilization	72%	71%	69%	66%	69%	75%	88%	102%	116%	133%	153%	171%

UTILIZATION < 80% > 120% 80% - 120%

Program Viability

One of the primary aims of the Brooklin English Study is to create viable, sustainable enrolment at all three Brooklin elementary schools. With the French Immersion program for Brooklin now wholly located at St. Leo, there is an imbalance of English enrolment and utilization of capacity across the three Brooklin elementary schools.

Based on this new allocation of English and French Immersion students in Brooklin as of the 2021/2022 school year, it was necessary to initiate a study of the current and potential future English enrolment boundaries and programing at each school.

Proposed Boundaries and Implementation

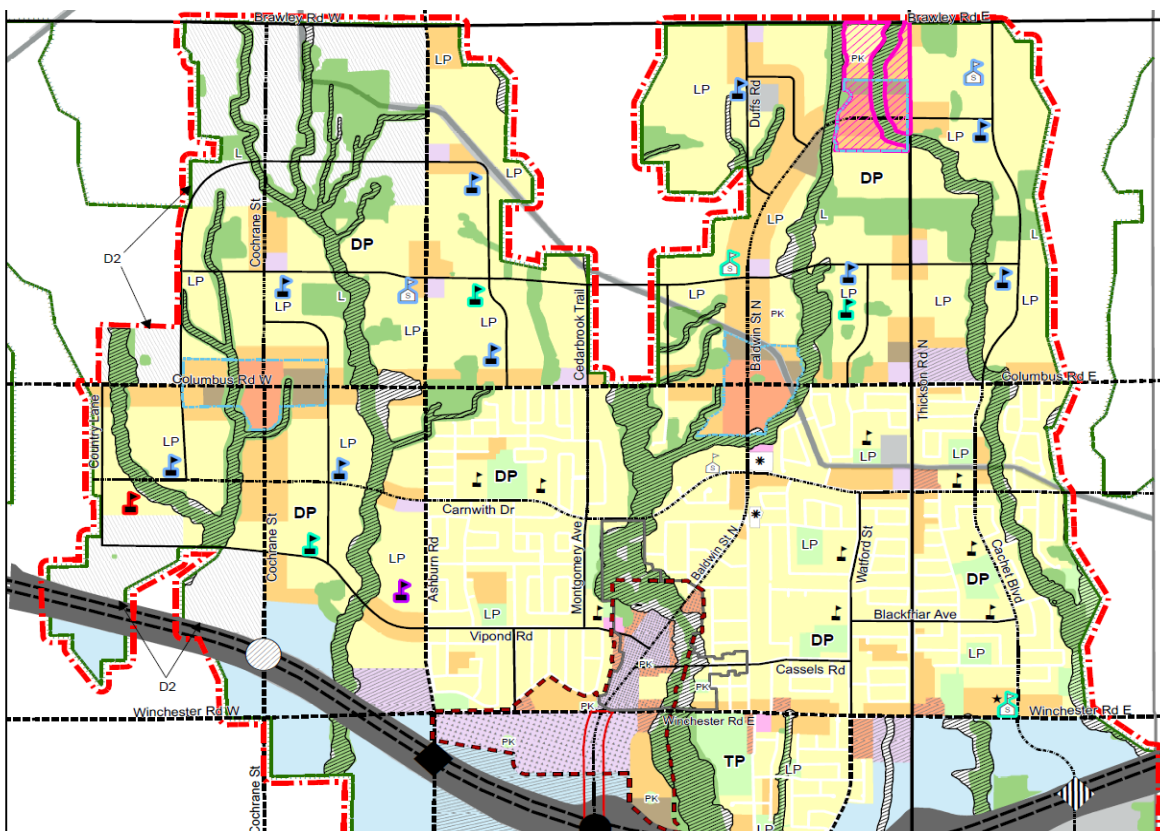
To correct the imbalance of English enrolment and utilization of capacity across the three Brooklin elementary schools, staff are proposing to move the English students currently attending St. Leo CS to St. John Paul II CS. St. Leo CS would continue to house the French Immersion program as a single stream school.

As part of the change to the Regular English track boundaries, staff are recommending that a geographic change happens to both the St. Bridget and St. John Paul II boundaries to help balance future growth in the Brooklin expansion area.

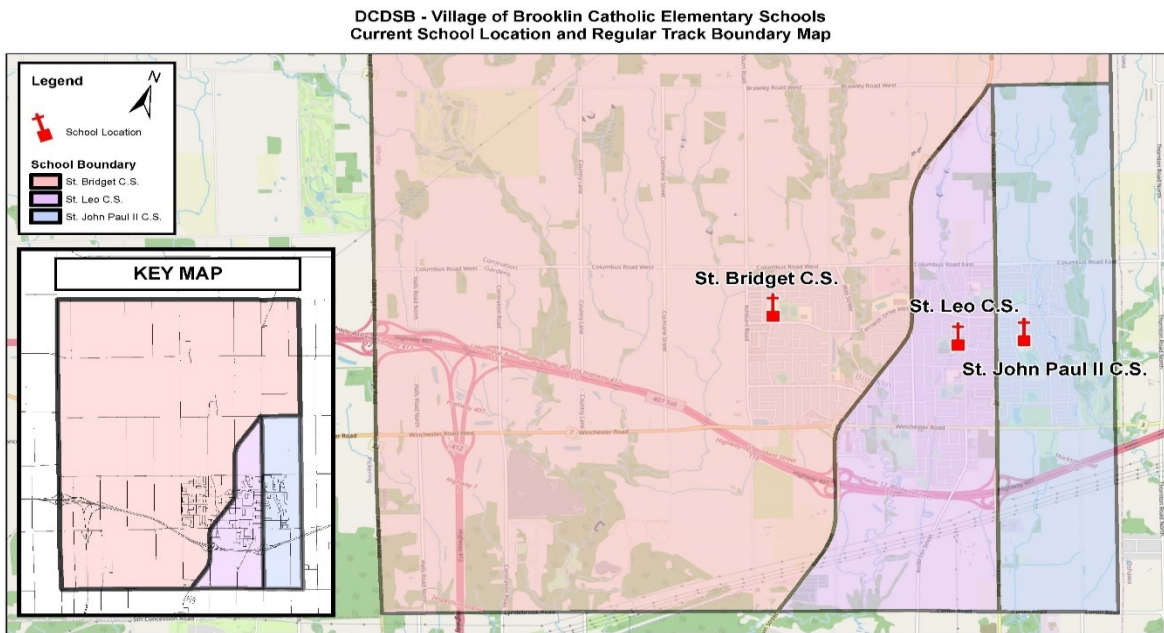
The town of Whitby approved Brooklin expansion plan accounts for various development in this area, and projects approximate housing and population totals. Staff

use actual plans of subdivision that developers submit to project school populations. In completing the projections exercise, staff have identified that if all the new development continued under the current St. Bridget boundary, it will continue to add to a capacity pressure in the future. Removing one development area from St. Bridget and moving it to the proposed St. John Paul II Regular English track boundary, will help balance future enrolment pressures that will come from the Brooklin expansion growth. This boundary adjustment has the potential to alleviate, in advance of the expected growth, the need for a future Board of Trustees to enact a boundary change that would require several students attending St. Bridget to move to St. John Paul II.

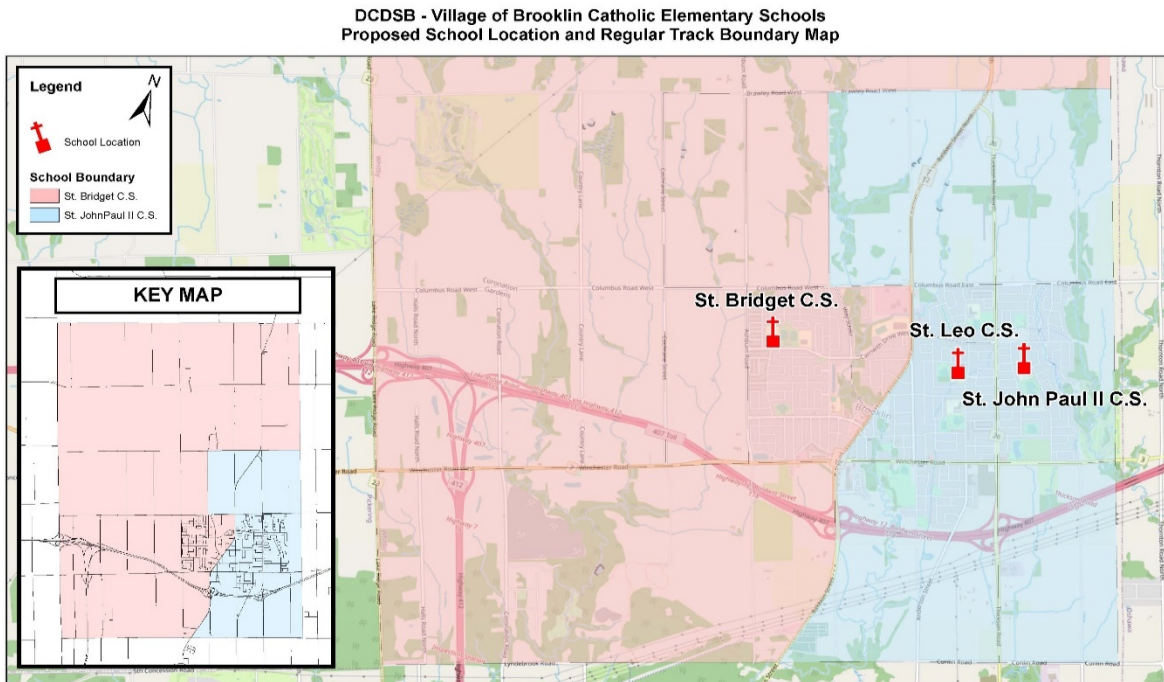
Brooklin Growth Plan



Current English Boundaries in Brooklin



Proposed English Boundaries in Brooklin



Study process

The Committee (Appendix A) has conducted two committee meetings and three public consultation meetings.

In accordance with the schedule, the Committee met on Wednesday, October 19, 2022 – Virtual – Microsoft Teams from 1:00 p.m. to 3:00 p.m., and Wednesday, November 16, 2022 - Virtual – Microsoft Teams from 1:00 p.m. to 3:00 p.m.

A public meeting was held on Tuesday, November 8, 2022, at St. Leo Catholic School from 7:00 p.m. to 9:00 p.m., at which 15 people signed in for attendance. A virtual public meeting was hosted on Microsoft Teams on Wednesday, November 9, 2022, from 7:00 p.m. to 9:00 p.m., and 4 people attended. And a final public meeting was hosted at St. John Paul II Catholic School on Tuesday, November 15, 2022, from 7:00 p.m. to 9:00 p.m. and 8 people signed in for attendance with 3 returning from November 8, 2022.

In total 15 comments and questions were received during the consultation process. All questions and comments by the public during the entire process, either at the public meetings or through email and/or phone, that are relevant to the study, have been responded to.

By way of synopsis the following is a general representation of the nature of questions or comments received, along with the response, none of which are unexpected and are typical in this type of process:

- Concerns around the disruptive nature of this type of change for students.
 - Any type of change is going to have some disruptions, and staff try to minimize those.
- Personal questions about how the change will impact them based on their address.
 - These are answered using the mapping.
- Busing as an option and the potential safety concerns of having to walk across Thickson Road if there is a crossing guard added in the future.
 - A cross-guard must be approved by the Town of Whitby. Durham Student transportation Services (DSTS) works through this process and provides busing based on the DSTS policy.
- Questioning the validity of the projections and the timelines of the growth in Brooklin.
 - The projections are based on plans of subdivisions that have approved housing unit yields. These numbers are quite consistent and there can be variations in timelines for when the development is built, but the timelines don't change the yields.
- The potential of dividing siblings if one child is in French Immersion but the other child isn't.
 - French immersion is a program of choice that families have to make.

- The potential for families to choose to leave the system due to not having an English program in the French Immersion school to transition too if they are not succeeding in the FI program.
 - School staff support students in their success and invest resources to ensure the students complete their education, but the FI program does have a demission rate.
- Having enough students in either impacted school to offer viable programming.
 - We have other schools in the system with similar or smaller populations. This change is designed to position the Brooklin schools to balance the future growth and maintain viable long term student populations and capacity totals.
 - The table below reflects the current totals of English and French students at St. Leo. This was a chart that some of the parents asked to see for comparison.
 - They also wanted to know the number of students that moved from St. John Paul II as part of the 2021 French immersion consolidation at St. Leo. Out of the 80 grade 1-5 French Immersion students at St. John Paul II in 2020, 24 chose not to move over to St. Leo CS in 2021 for the FI Program.

ST. LEO ENROLMENT: AS OF NOVEMBER 10, 2022			
Grade Level	RT (English)	French Immersion	Total in Grade
JK	34		34
SK	33		33
1	10	24	34
2	18	17	35
3	10	21	31
4	15	19	34
5	8	12	20
6	16	15	31
7	11	16	27
8	8	8	16
Total (Includes the JK/SK)	163	199	295

- Childcare options.
 - Before and after programs are offered in Brooklin schools. The St. Leo full-service childcare program is run by the YMCA.

Communication

The Durham Catholic District School Board committed to an open and transparent process that allows for public input through a variety of means. Following the formation of the Committee staff set up the following means of communication and input:

- A dedicated web page containing all the information
https://www.dcdsb.ca/en/our-board/Boundary-Reviews.aspx?_mid =122365
- A phone line at 905-576-6150 ext. 42252
- Email address planning@dcdsb.ca

Recommended Option

The public consultation process provided the committee with a lower than expected turnout of parents/guardians, and the questions and comments were similar in nature and not as many as would be expected with this type of change. As a result of this boundary and program realignment recommendation, the Board is aware of concerns parents may have with respect to the transition of regular track students that are currently in Grades 6 and 7 as of September 2022. As a result, staff would recommend that students going into Grades 7 and 8 in September 2023 in the English program at St. Leo CS be identified as legacy students at St. Leo CS until they graduate pending sufficient interest. This option allows the capacity of each school to be balanced in the long-term and positions the board to be able to apply for new schools in Brooklin, as there isn't expected to be any more space in the three schools to accommodate the growth beyond 2031, when additional school(s) would be required.

St. Leo	ACTUAL		PROJECTED									
	Oct-21	May-22	2022	2023	2024	2025	2026	2027	2028	2029	2030	2031
Regular Track (Grades 1-8)	97	95	89	28	16	0	0	0	0	0	0	0
Kindergarten	70	64	62	58	58	58	58	58	58	58	58	58
French Immersion	147	144	160	178	169	170	173	175	175	180	174	168
Total	314	303	311	264	243	228	231	233	233	238	232	226
Capacity	266	266	266	266	266	266	266	266	266	266	266	266
Utilization	118%	114%	117%	99%	92%	86%	87%	87%	88%	89%	87%	85%

St. John Paul II	ACTUAL		PROJECTED									
	Oct-21	May-22	2022	2023	2024	2025	2026	2027	2028	2029	2030	2031
Regular Track	228	223	215	280	282	296	312	334	362	392	440	492
French Immersion	38	38	23	0	0	0	0	0	0	0	0	0
Total	266	261	238	280	282	296	312	334	362	392	440	492
Capacity	458	458	458	458	458	458	458	458	458	458	458	458
Utilization	58%	57%	52%	61%	61%	65%	68%	73%	79%	86%	96%	108%

St. Bridget	ACTUAL		PROJECTED									
	Oct-21	May-22	2022	2023	2024	2025	2026	2027	2028	2029	2030	2031
Regular Track	369	364	353	340	351	370	412	455	490	541	601	653
French Immersion	0	0	0	0	0	0	0	0	0	0	0	0
Total	369	364	353	340	351	370	412	455	490	541	601	653
Capacity	513	513	513	513	513	513	513	513	513	513	513	513
Utilization	72%	71%	69%	66%	68%	72%	80%	89%	96%	105%	117%	127%

UTILIZATION < 80% > 120% 80% - 120%

Under the staff recommended boundary change, the students in the St. Leo CS English boundary going into grades 1 to 6 in September 2023 would be directed to attend St. John Paul II CS as their new home school.

St. Leo CS would continue to provide an English Kindergarten program for students who meet one or all the following criteria:

- Reside within 1.6 km walking distance to St. Leo CS;
- Have existing childcare within the school's childcare provider;
- Already have an older sibling attending the French Immersion program at St. Leo CS.

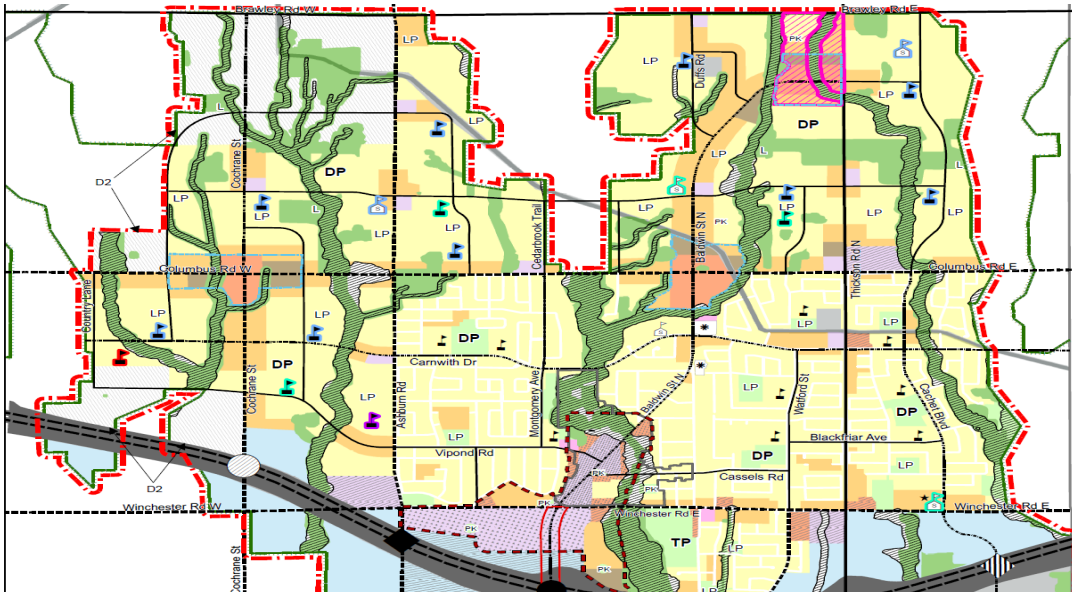
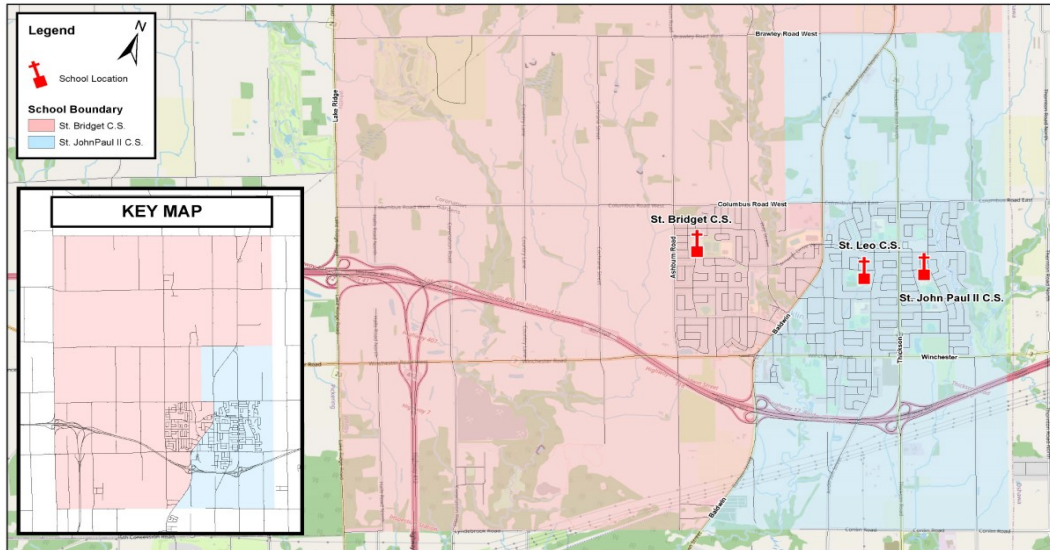
The school will be capped at 2 Kindergarten classes each year to be able to accommodate students in the two purpose-built JK and SK classrooms at St. Leo CS.

The following example scenarios highlight some of the potential impacts to families:

- A student residing within the 1.6km walking boundary of St. Leo who plans to continue in the regular **English track**, would be eligible (space contingent) to attend St. Leo for Kindergarten, but would be required to attend St. John Paul II for grade 1-8.
- A student residing within the 1.6km walking boundary of St. Leo who plans to continue in the regular **French Immersion track**, would be eligible (space contingent) to attend St. Leo for Kindergarten, and continue in the FI program at St. Leo through grades 1-8.
- A student residing outside the 1.6km walking boundary of St. Leo who plans to attend the **French Immersion track** grades 1-8, would only be eligible (space contingent) to attend St. Leo for Kindergarten if they have proof of the child attending a childcare within the St. Leo 1.6km walking boundary, or have a sibling in the St. Leo FI program.

After consideration of the above information the Committee confirmed the recommendation as presented, with the only adjustment from the original "In-principle" recommendation to the physical boundary associated with the annexed part of the St. Bridget growth area into the St. John Paul II boundary. The annexed portion will only include the new development and will not displace families that are currently residing in this area and attending St. Bridget.

DCDSB - Brooklin Community - Catholic Elementary Schools
Proposed School Location and Regular Track (English) Boundary



Upon receipt and review of the Committee's recommendation the Director and Senior Administration concur with the recommendation as presented to ensure the viability of the English and French programming and the long-term sustainability of all three schools in Brooklin.

Next Steps

Upon approval staff will initiate an implementation process as follows:

- Transportation
 - Review of Thickson Road crosswalk viability with the Town of Whitby;
 - Transportation details to be finalized and communicated in 2023.
- Transition Plans
 - Introduction to school community
 - Site visits and tours;
 - Community team building;
- Communication
 - Letters to families impacted by the decision;
 - Open house;
 - Transition newsletter;
 - Survey to parents of students in grade 6 and 7 at St. Leo CS in the Regular English track program, to determine whether there is sufficient interest and viable class sizes.

TB/MoN/SG/br/tc

Attachments: Appendix A
Q & A's from meetings

Appendix A:

The Brooklin Regular (English) Track Study Committee is comprised of the following representatives:

1. Mike O'Neill, Superintendent of Education – Whitby Family of Schools (Chair)
2. Scott Grieve, Superintendent of Business, Finance and Facilities Services
3. Daniel Carlin, Sr. Manager of Planning, Admissions and Capital
4. Jackie McVeigh, Sr. Manager of Human Resources
5. Kelly Mechoulan, Manager of Durham Student Transportation Services
6. Angela Rancourt, Principal St. Leo Catholic School
7. Catherine Faria, Principal St. John Paul II Catholic School
8. James Tremblay, Principal St. Bridget Catholic School
9. Amanda Roffey, Communications Manager
10. Luetasha Watkins, Operations Manager - Early Years and Childcare
11. Jody Dale, Planning Coordinator
12. St. Bridget Catholic School Parent Council Representative
13. St. John Paul II Catholic School Parent Council Representative
14. St. Leo Catholic School Parent Council Representative
15. OECTA Elementary President
16. ETFO President
17. CUPE President
18. YMCA Director

ID	Start time	Completion time	Email	Please enter your first name	Please enter your last name	Please enter the name of the school your child currently attends	Please enter any questions or comments you have about the boundary review, transition, implementation considerations and/or process.	Response	Responded
1	10-4-22 13:23:32	10-4-22 15:24:24	anonymous			St. John Paul II Catholic School	The new boundary system makes sense and will serve Brooklin well.	Thank you You are welcome to attend the information session to express any concerns, and provide input on the presented options. Your comments would be included in the final report to the Board of Trustees, and they make the final decision. You also have the ability to make a delegation to the board of trustees.	yes
2	10-4-22 14:53:09	10-4-22 14:56:24	anonymous			St. Leo Catholic School	How do we stop this potential change? What are the anticipated classes at SJIP, once St. Leo and the annexed portion of St. Bridget's boundaries? Also I just want to clarify that all English speaking track students for all of Brooklin are to be accommodated in 2 schools? This move is going to disrupt the lives of every student and family currently at St. Leo's and there is a good chance you will lose a lot of students to the public system. I can't believe this stupidity is actually a stress in my life right now. So much for buying a house near my kids school when I moved into town. I want you all to keep in mind that this is an election year and anyone in a voted position will not receive my vote going forward should this change actually be made.	1 Class size will depend on the total number of students per grade, pending any approved change. NCE standards call for 23 students per classroom 2- Yes, with the exception of the JK/SK program that will remain at St. Leo, the English track programs in Brooklin will only be at St. John Paul II and St. Bridget. I do understand that this change will impact people differently, and we want to make sure we try to limit the impact as much as we can without having families make alternative choices to the Catholic Education system. Busing would be available to all students that reside west of Thicken Road. The process for acquiring a crossing guard for Thicken Road, will be pursued with the Town of Whitby. Those students residing between Columbus Rd W and Brawley Rd West, and between Baldwin Rd and Cedarbrook Trail would be directed to St. John Paul II CS.	yes
3	10-8-22 21:09:51	10-8-22 21:17:26	anonymous			St. Leo Catholic School	We moved to Brooklin 3 years ago and part of our choice in choosing where to live was dependent on the school. The expectation for children to be crossing a major road like Thicken is not ideal in any situation regardless of cross walk staff. Busing would need to be accessible for all students that are West of this major road.	Yes	
4	10-11-22 16:06:48	10-11-22 16:10:48	anonymous			St. Leo Catholic School	I would like clarity on the new boundaries for St. Bridget. Which students would be required to leave at Bridget and attend the other English track school?	You are welcome to attend the information session to express any concerns, and provide input on the presented options. Your comments would be included in the final report to the Board of Trustees, and they make the final decision.	yes
5	11-6-22 14:49:06	11-6-22 14:50:47	anonymous			St. Bridget Catholic School	I have a son with a learning disability. He won't be able to enroll and succeed in french immersion like his siblings. This would result in our family having to choose between french immersion and separating my children who rely on each other!	1 Out of the 80 grade 1-5 French Immersion students at St. John Paul II in 2020, 24 chose not to move over to St. Leo CS in 2021 for the FI Program. 2 - as of Sept 2021 there were 134 FI students in grades 1 to 7 at St. Leo. As of 2022 there are 106 grades 2 to 8 FI students. We also have 67 JK/SK & 24 Grade 1 students at St. Leo. When creating a school boundary for a Regular Track English program elementary school, The DCDS tends to base the catchment area on 4500 to 5000 units of low density housing to create the student yield needed to ensure a school is close to the 100% capacity. This often creates boundaries where a significant number of students are placed on a bus for their Home school. Brooklin is unique that St. Leo and St. John Paul II have boundaries that have allowed the majority of the students to be walking students for the past 10 years. However as these walking school aged populations have steadily decreased, the need to expand the boundary for St. John Paul II has become necessary to ensure that the school can remain viable and closer to 100% capacity. The DCDS always strives to maintain a balance of enrollment at all of its schools to attend full viable schools. At times, this means altering boundaries and increasing the amount of students that would be on a bus.	yes
6	11-8-22 15:01:53	11-8-22 15:03:15	anonymous			St. Leo Catholic School	During the Brooklin French Immersion Study meeting it was suggested by board presenters that there would be minimal student attrition/loss with a program move. Anecdotally, that did not seem to be the case with the move of immersion from JP II to St. Leo. Jody Dale and Scott Grievie indicated tonight that they'd be able to provide information on the following: 1. The number of JP II immersion students who didn't make the move to St. Leo in September 2021. 2. The number of JP II immersion students who did move to St. Leo but either left before the end of the year or changed schools for the 2022-2023 school year. I know that from last year's grade 5 cohort (birth year 2016) at least 10 students, who initially made the move from JP II, are no longer at St. Leo. I'm curious whether other grades saw a similar trend of students either returning to JP II or moving to the public board. During the Brooklin FI Study, I think the board underestimated how many parents in this community would opt to keep their students at the local, walkable school and I'm curious if the numbers support that hypothesis. Based on the numbers from the FI study and the numbers at the meeting tonight, it looks like there were approximately 40 fewer FI students at St. Leo in Oct. 2022 than anticipated. As a percentage of the total Brooklin FI population 40 students is a massive loss. If there was more significant population loss during the move from JP II to St. Leo, I'm interested to know how the board is using that recent community data to help inform projections/plans during the Brooklin Regular Track Boundary Review. I suspect (know?) that in the Brooklin community, parents value convenience and walkability over specific programming options (FI, Catholic school etc.). These assertions have largely proven to be the case when it comes to students in our Brooklin Catholic schools opting for Brooklin High vs. getting on a bus to continue in a Catholic high school in Whitby. I worry that parents will opt for the walkable DCDS elementary school when faced with the prospect of putting their kids on a bus to JP II and that there will be larger than anticipated student loss from the system as a result of this boundary shift.	1 Out of the 80 grade 1-5 French Immersion students at St. John Paul II in 2020, 24 chose not to move over to St. Leo CS in 2021 for the FI Program. 2 - as of Sept 2021 there were 134 FI students in grades 1 to 7 at St. Leo. As of 2022 there are 106 grades 2 to 8 FI students. We also have 67 JK/SK & 24 Grade 1 students at St. Leo. When creating a school boundary for a Regular Track English program elementary school, The DCDS tends to base the catchment area on 4500 to 5000 units of low density housing to create the student yield needed to ensure a school is close to the 100% capacity. This often creates boundaries where a significant number of students are placed on a bus for their Home school. Brooklin is unique that St. Leo and St. John Paul II have boundaries that have allowed the majority of the students to be walking students for the past 10 years. However as these walking school aged populations have steadily decreased, the need to expand the boundary for St. John Paul II has become necessary to ensure that the school can remain viable and closer to 100% capacity. The DCDS always strives to maintain a balance of enrollment at all of its schools to attend full viable schools. At times, this means altering boundaries and increasing the amount of students that would be on a bus.	yes
7	11-8-22 21:16:26	11-8-22 22:24:29	anonymous			St. Leo Catholic School	My concern is around daycare. We currently attend the YMCA inside of St. Leo. My daughter will start JK next year. For many families, switching school is not that easy because daycare is the number one consideration. Since the announcement of DCDS day care by the federal and provincial governments, daycare has become extremely hard to come by in Brooklin and waitlist are quite lengthy. I know from conversation with the YMCA provider at St Leo that there is already a very extensive waitlist for before and after care for next year. My neighbour has been waiting over a year for a spot for her 7 primary age students at Winchester P5 down the street, and as of September still did not have spots for them. I can only imagine this situation is similar at St John's. I am fortunate that because my daughter is already a part of the daycare at St Leo, she is guaranteed a before and after care spot. However, this means that in a way we are "forced" to choose St Leo, not because of the program being offered but due to childcare needs. If we decided to go the French immersion route in grade 1 and realized that it isn't a good fit, I am highly concerned that without an English stream option, we won't be able to move because we won't have child care readily available at another school (especially if a change was made after the start of the year). Additionally, I feel it is important to point out that on my street alone, I know of 3 families who were planning to attend St. Leo. When I speak with them and tell them about the proposal for a single track FI schools, the response is always the same. "So what if my child finds FI isn't a good fit? I'd have to change schools? Maybe it's better to just register at Winchester P5 instead." For most of us in the neighbourhood unfortunately St John's won't even be a consideration. We all live within the "walking web" on the west side of Thicken and are concerned with the idea of sending our children across that busy intersection, even with a crossing guard present, when there is a public school safely within walking distance to our homes (Thicken is getting busier by the day, there have been tractor trailer roll overs along that stretch in the last year AND there is a proposal from the Town of Whitby to make that the official truck route through town to divert traffic from Main Street and convert it to 4 lanes...has this been looked into or considered as an accommodation plan?). I know this decision is to try to prevent enrollment decline, but I think you're going to lose enrollment anyways by eliminating an English stream at this community school. The neighbourhood is turning over with lots of young families moving in and I worry future Catholic school families have not been considered in the proposal. I wanted to point out daycare considerations. Since the announcement of 10/day daycare from the government, daycare has been very difficult to come by in Brooklin, waitlist are long and this includes before and after care. Unfortunately I feel we are making our school enrollment decision based on childcare needs and not the program being offered at a particular school. In speaking with the St Leo YMCA operator, the waitlist is already long for next year and have neighbours who have been waiting over a year for a spot at Winchester P5 down the road. I can only imagine it is the same at St John. By eliminating an English stream at this community school it puts many families in a difficult situation when it comes to childcare options and availability.	Thank you for your comment. Both St. Leo and St John Paul II have before and after programs offered by YMCA. French Immersion is a choice and is not offered at all sites. We do try to make sure supports are in place for families that choose French Immersion, so the child can be successful. We are aware of the Town of Whitby information regarding the Thicken road potential changes.	yes
8	11-13-22 8:18:58	11-13-22 8:52:41	anonymous			St. Leo YMCA	We live in [redacted] Whitby and my kids will be the only 2 kids relocated (JK and SK). As of now the west side of [redacted] is within St. Bridget's boundaries and the east side is relocated to St. John Paul II. The entirety of the street is less than 20 homes and will not be affected by land development as it is all conservation land. It would make more sense to have one bus go up that street rather than 2. Also my kids have really progressed at St. Bridget socially and academically, my son has got his IEP set up there and it had become a place he loves to be.	Those students residing between Columbus Rd W and Brawley Rd West, west of Baldwin Rd and east of Cedarbrook Trail would be directed to St. John Paul II CS. Considerations are being looked at for those families that live on the east side of Cedarbrook Trail to be exempt from the boundary change for the annexed portion of St. Bridget CS.	yes
10	11-15-22 19:07:36	11-15-22 19:16:05	anonymous			St. Bridget Catholic School	My family has not been able to attend any of the boundary review meetings, in person or online, but I thought I would share my concerns with the change. As a Catholic teacher I want to support Catholic education. I do not think our children will move to the public system if the proposed change is enacted, but I know of several families that are talking about leaving the Catholic system if their children are not able to attend St. Leo CS. In a time of decreasing enrollment in Catholic schools, especially high schools in the Durham region, it seems strange to me that the board would push through with this change. Is the proposed change likely to bring more students, and theoretically more tax dollars, from the public system to the Catholic system? In the Catholic school, even more than the Church for many families, not the heart of the community? It may be the only place some students engage in Catholic community and learn Catholic values. Why push them away or alienate families for a specialized program that will more than likely not bring you more tax dollars? How many students left FI to return to English stream at Pope St. John Paul II, wanting to be closer to home, closer to old friends? What is the likelihood of high enrollment at an FI-only school in Brooklin? Where are more Catholic schools? Why will the board really need for a high school in this area to retain Catholic families in Catholic schools? It seems like the decisions being made will drive families away. It seems more than likely that the decision has already been made. I live St Leo CS. I have one son in FI and two who are not. I do not like the idea of them splitting up. Our children have always gone to St Leo. We moved our home and 2018 made sure we bought within the same neighbourhood so our children's school would be walking distance, so they would not have to change schools. Our family is just one voice. Again while we were not able to attend any of the meetings we did want to express our opinion and concerns about the proposed changes. Thank you for your time.	Thank you for your comments. The changes are being recommended to better align the three schools in Brooklin to accommodate future growth that is anticipated from the development. Our Catholic schools are the heart of the community, but we need to make sure the long term success of the school is balanced in all of our communities. We noted that 28 of 60 students chose to stay at St. John Paul II during the French Immersion consultation. We anticipate a steady enrollment in the FI program at St. Leo, which will grow with the future growth in Brooklin. Future Catholic schools would be built when the growth exceeds the current capacities of the existing Brooklin schools, but the capacity needs to be exceeded at all schools before a new school can be requested, therefore this recommended change allows the board to be in a better position to request those schools in the future. A high school normally requires 5 to 6 elementary feeder schools.	yes
11	11-15-22 21:48:59	11-15-22 21:11:00	anonymous			St. Leo Catholic School	Thank you for your time.	Busing would be available to all students that reside west of Thicken Road. The process for acquiring a crossing guard for Thicken Road, will be pursued with the Town of Whitby.	yes
12	11-16-22 11:39:32	11-16-22 11:41:07	anonymous			St. Leo Catholic School	I don't want my kids walking to St. John Paul II it's so far and not safe. I would like them to be bused.	The YMCA is able to expand to meet the needs of families if we are able to secure additional rooms in the school and able to secure staffing for the rooms.	yes
13	11-29-22 18:21:00	11-29-22 18:36:14	anonymous			St. Leo YMCA	I was hoping to add some further context to the response I received from Jody Dale on Nov. 29 and ask a follow up question: "Both St. Leo and St. John Paul II have before and after programs offered by YMCA. French Immersion is a choice and is not offered at all of our sites. We do try to make sure supports are in place for families that choose French Immersion, so the child can be successful." I understand that FI is a choice (it actually is not my first choice for my children). However, St Leo in my neighbourhood, steps from my front door and where our daycare program is currently located. Having gone through the process of finding daycare over the last year, I know that getting a spot is not as easy as just walking in and asking for one. After discussions with the YMCA at St Leo, I know that I have a guaranteed spot for before and after care because I am a current client. There is already a waitlist for next year, and if my children were not already a part of the centre there is no guarantee I would have a spot because I was enrolled at the school. As a result, St Leo might have to become my school choice because that's where I have child care. My question is, have discussions taken place with the providers to ensure that adequate before and after care spots will be available at both schools for enrolled students? My preference would be an English stream school, but without child care I may not have a choice.	St. Leo will have a JK and SK program that will be potentially capped at 58 students per year or 29 students per grade. Combined with the Grade 1 to 8 FI program, St. Leo will operate at about 90% capacity over the next 10 years. This is an acceptable capacity for an elementary school within the DCDS. The French Immersion program at St. Leo is open to students at St. Bridget, St. John Paul II and SK students at St. Leo. New housing and students that migrate into Brooklin from other areas of Durham Region as well as the GTA.	yes
Virtual Meeting	11/09/2022 19:43:18						Quick question - will St. Leo have enough FI students with this change?	yes	
Virtual Meeting	11/09/2022 19:43:48						OR, will other students from other areas be joining the school as well?	yes	
Virtual Meeting	11/09/2022 19:46:04						This growth will simply be achieved through the new housing?	yes	